

# Welcome!



Our goal from the very beginning is a 5.0 review.



**We hope it shows.**



**We've tried to think of everything.**

But if we missed something – we're just a quick phone call away.

John: xxxxxxxx

Jeanette: xxxxxxxxx



Welcome  
aboard



We hope you enjoy your stay at The Dockside in Port City Marina!

**Please do not hesitate to reach out for anything you might need during your stay. You can call or text us at xxxxxxxx or xxxxxx.**

**There are a few very important rules and regulations in the Marina that we and our guests must abide by:**

1. The Marina is a living community and noise should be kept to a minimum. There is a community noise ordinance in effect beginning at 10 p.m. each evening - including on weekends.
2. Absolutely no parties are allowed on any of the houseboats. A party is considered a group of more than 6 individuals -- and we will be notified immediately by Marina personnel if this policy is violated. Violations may result in immediate eviction without refund.
3. We do not allow pets at the Dockside and we'll be notified if pets are housed at the home. A \$500 cleaning fee will be assessed to remove pet hair and dander for anyone bringing a pet to the Dockside.

### **Codes and such:**

- Gate code to the ramp: xxxxx.
- Digital lockbox code will be provided to you in advance and will work for the full length of your stay only.
- Wifi password is clearly marked inside the pantry.
- If you need help from marina staff, their number is xxxxxxxx

# Check out Check list.

IMPORTANT!

- Check out is 10 a.m. unless we've made other previous arrangements – we often have another group arriving the same day.
- Please sign the guest book on table by the sofa!
- Strip used beds + pillows and leave sheets on the bedroom floor
- Load and start the dishwasher (pods are under sink)
- Toss any used towels on the floor of the bathrooms
- Place trash in the containers at base of the dock entry ramp
- Return parking pass to the counter/bar area
- Make sure all appliances have been turned off
- Shut off the lights and fans
- Lock up and **return the key** to the lockbox (and make sure the lockbox is locked and secure).

Thank  
You!



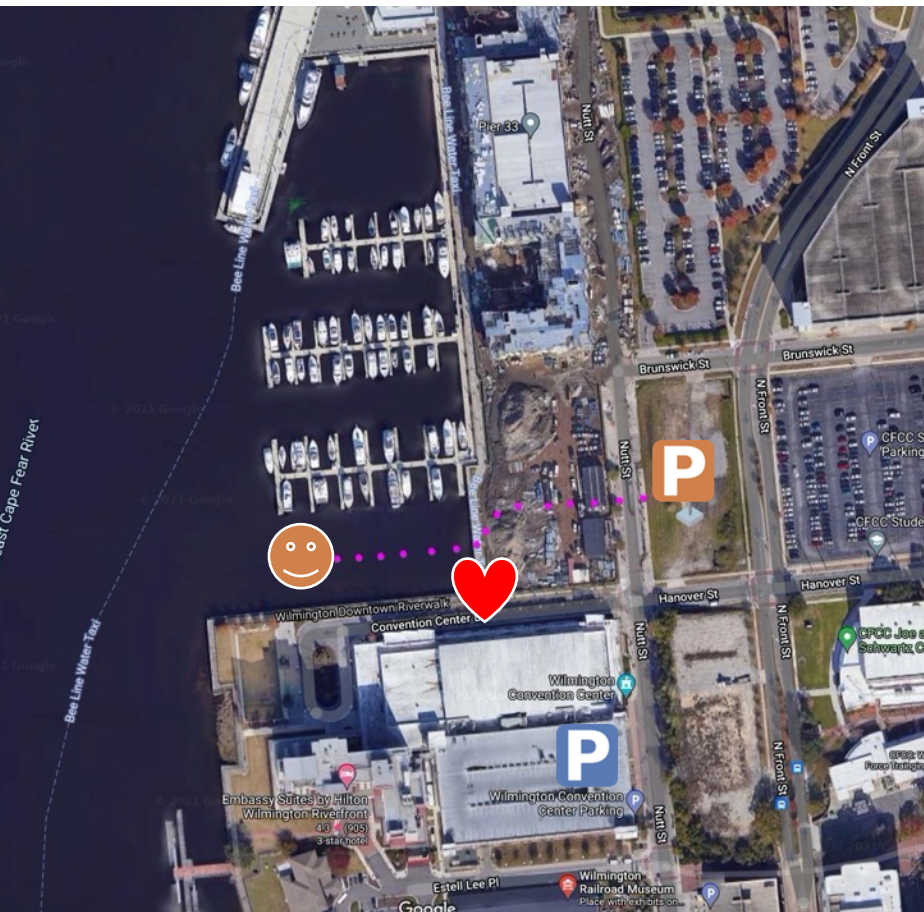
## Park at Brunswick and Nutt Street



# Parking + Offloading

**Houseboat parking requires wicked new skills. Nah, just kidding.**

No, you don't have to park the houseboat. But since our home is literally on the water, you can imagine that you'll need to park on the dry land. Use the parking pass we'll provide and park in the marina gravel lot shown here with the orange **P**



### Pro tip:

Unless it's a rare day with an event at the convention center, park along side the boardwalk, drop your luggage and partner – and then go park. When it's time to go, just reverse the process!

### But we have multiple cars?



Additional parking is available at the Wilmington Convention Center parking lot, adjacent to the Docksider for just \$14 per day.





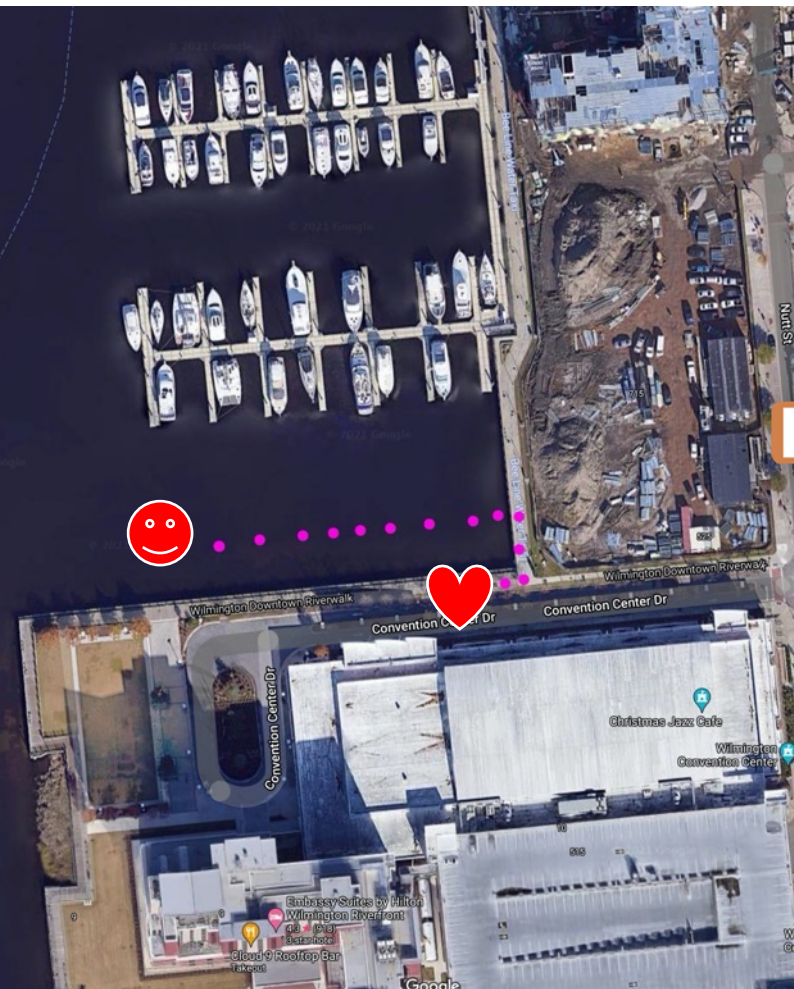
*access*

**You don't have to be James Bond.**


But you may have to crack some codes.

**Dock Access:** xxxxxx

**Home Access:** One-time code provided prior to visit



**Pro Tip:**

When you first arrive to the area, stop beside the Riverwalk beside the Convention Center  put on your hazards, drop your partner and the gear, then go park.

Save your energy for dining and dancing. Then repeat for provisioning, and for check out.





## Check in. Then go check it all out.

No one wants to think about checkout before they've even checked in. But with a little planning ahead, you can maximize your stay at the Dockside.



### Check-In time:

**Any time after 4 p.m. on your arrival date.**

Need a different time – just check with us – if we're not overlapping another guest, we can probably make it work.

### Check-out time:

**Any time before 10 a.m. on your departure date.**

Need a different time – just check with us – if we're not overlapping another guest, we can probably make it work.

### Physical address:

**xxxxxxx Street  
Port City Marina**

### Parking address:

**Gravel lot at Brunswick  
and Nutt Street**

We'll provide you our pass for that lot – it will be located on the kitchen bar upon arrival and should be used ASAP.



*a very different  
kind of stay*

**IMPORTANT!**

## **Ahoy Matey. You're on the water (and other quirks at the Dockside).**

We know. Duh. But it's important that we get a few things very clear about this very different home stay.

- 1. You're on the water and things can move.** It's not like you're on the open ocean, but there's a reason the doors are kept magnetically open – things can subtly shift and sway on a home like this. No one's gotten seasick. Ever. But it might not be just the Margaritas that have you walking funny.
- 2. Your backyard is literally a marina.** So although our Dockside home is secured by railings, please keep an eye on children – and adults acting like children – at all times. Please give the water the respect it deserves.
- 3. Trash.** There's a common trash and recycling area near the entrance to the docks. Please place trash bags and recycling in their respective places and not on the front porch so things look nice for the other residents.
- 4. Dogs and smoking.** We love dogs. And we love a good cigar. But we do not allow them at the Dockside. Particularly if your dog smokes cigars.
- 5. Grilling, fires and such.** Since you're on a boat in a marina environment, no grilling or fires of any kind are permitted at this time on the home or decks. At the first sign of smoke or fire, you will quickly be greeted by the NC Fire Department.





## Before swearing at the TV, read this.

We call it OPS (other people's stuff). And it's maddening sometimes – whether you're trying to find the hockey game or just making popcorn in the microwave.

- 1. Property Access.** A one-time code will be provided in advance that will allow access throughout your stay.
- 2. Internet and Router.** Wifi codes and access will be clearly posted in the Dockside – inside the pantry. The wi-fi is satellite-based and should be more than adequate for most uses -- but may buffer when streaming television and movies during peak usage.
- 3. Washer + Dryer.** Our unit has a full washer and dryer. All we ask is that you only put the same things in these appliances that you would put in yours at home. For example, please shake the sand from the beach out over the water in the marina, please.
- 4. Television.** All our TV's are all voice enabled and easy to operate. YouTube television is set up with our account, and you are free to sign into Netflix, Prime or others using your account.
- 5. Alexa and Music.** Music is available in most common areas and is Alexa-enabled. Just say "Alexa... play music by \_\_\_\_". If Alexa has trouble finding the internet, just unplug the power and plug back in to reboot.







beaches



**Take a dip.**

Let's just be honest with ourselves. The beaches are a big part of what drew you to Wilmington in the first place.

**Close  
Upscale  
Sleepy**

**Wrightsville Beach:**

The most conveniently located to most of Wilmington. Located at the end of Causeway Drive and home to awesome landmarks like Johnnie Mercers Fishing Pier. Wrightsville Beach has the most "upscale" vibe to it but we believe it has the least to do off the beach. It's a fabulous beach all throughout the year.

**Quick Uber  
Kitchy  
Fun  
Boardwalk**

**Carolina Beach**

Carolina Beach is an island just a 25-minute drive from the Dockside. It sits along the Cape Fear River and is home to Carolina Beach State Park, which if you enjoy hiking – is a must.

Carolina Beach feels much more of a classic beach town, and we honestly love the whole ambiance of it much more than Wrightsville. It has great beach bars and restaurants and home to an amazing boardwalk. On the boardwalk, don't miss Britt's donuts – it's highly over-rated but the line outside says it all.

**Aquarium  
Beach  
Kid-friendly**

**Fort Fisher**

Fort Fisher was a confederate fort during the American Civil War. Today, it's the last stop on the peninsula and houses the North Carolina Aquarium, a large beach area with lots of parking, and a 4x4-only beach access. It's another 10 minutes past Carolina Beach. The unique trees at Fort Fisher alone are worth the trip.

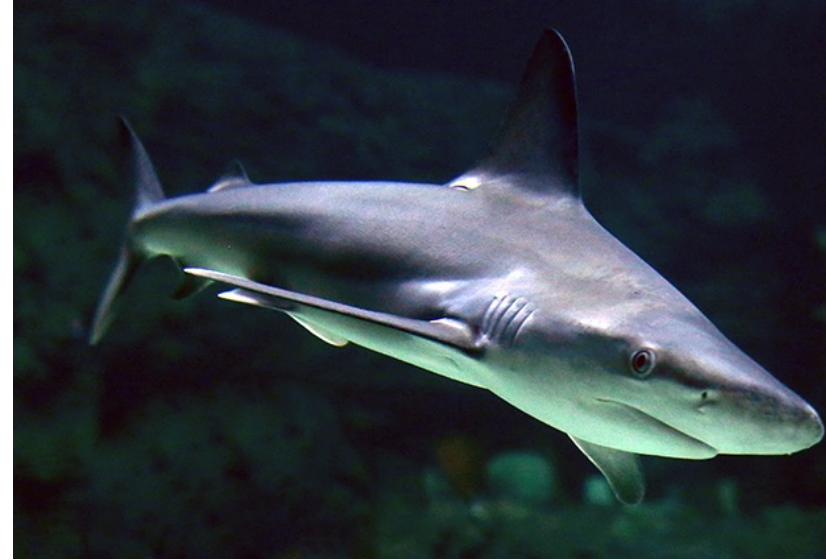


LUXURY SHORT TERM RENTAL  
HISTORIC DOWNTOWN, WILMINGTON



# *activities*

**Get out. And have some fun.**  
There's so much to do, it's silly.





dining



## Wilmington's food scene is changing daily.

Set in a historic building in downtown Wilmington, **Seabird** celebrates the seasonality of the seafood and ingredients found in North Carolina

For weekend brunch or a sophisticated dinner, visit **Rx Restaurant & Bar** for seasonally inspired, ingredient-driven Southern cuisine.

Featuring bounty from the area's best farmers, fisherman, oysterman and shrimpers, **PinPoint Restaurant** is known for its menu that changes daily and a selection of local raw oysters on the half shell

**The Fork n Cork** offers a spot-on combination of bar and comfort food in its historic downtown location. Portions are HUGE.

You have a couple choices at the nearby **Aloft Hotel – The Atlantic**, offers a little fancier American-European Fusion Cuisine with a fine dining atmosphere. Or try **aView** for sharable plates and tapas in an open-air rooftop area with a great view of the Cape Fear River.

Get a taste of Italy with a Southern coastal twist at celebrity chef Vivian Howard's creation, **Benny's Big Time Pizzeria**

Savor dishes created from a generation of original family recipes originating in the Abruzzo region of Italy at **Tarantelli's Ristorante Italiano**.

Spanish-inspired **Savorez** brings big Latin flavor to downtown Wilmington. We LOVE it for brunch.





16+  
breweries

OUR  
PICK



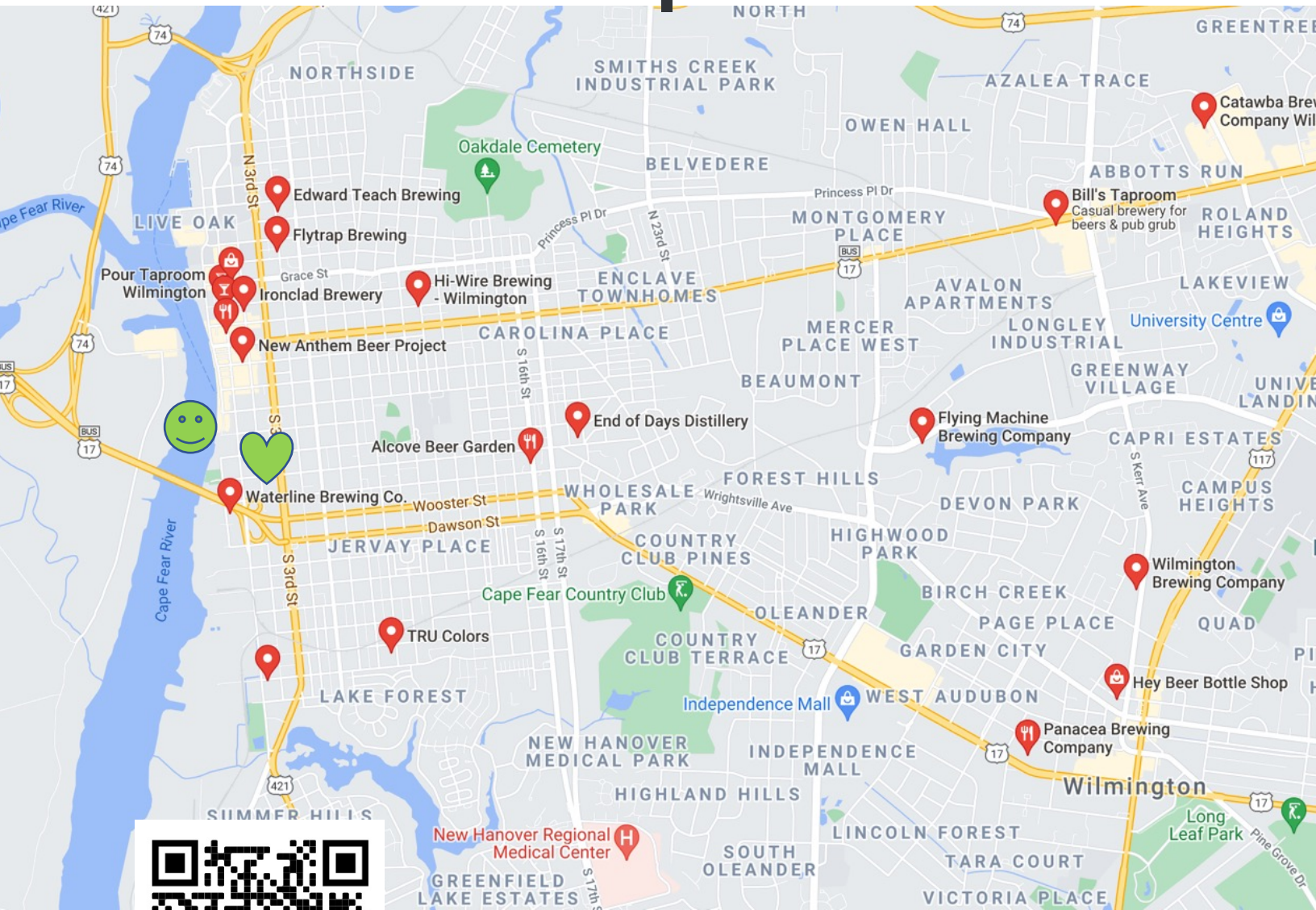
### Take a sip.

There are too many breweries in Wilmington to count and more popping up each day!

Here's a map to some nearby breweries – ready to serve you their favorite craft brews.

**Flytrap Brewing** is a neighborhood brewery located in the Brooklyn Arts District and quite walkable from the Docksider. Specializing in American and Belgian style ales, their small-batch brews are guaranteed to be at the peak of freshness.

Enjoy a pint in the Beer Garden and catch a food truck and live music!

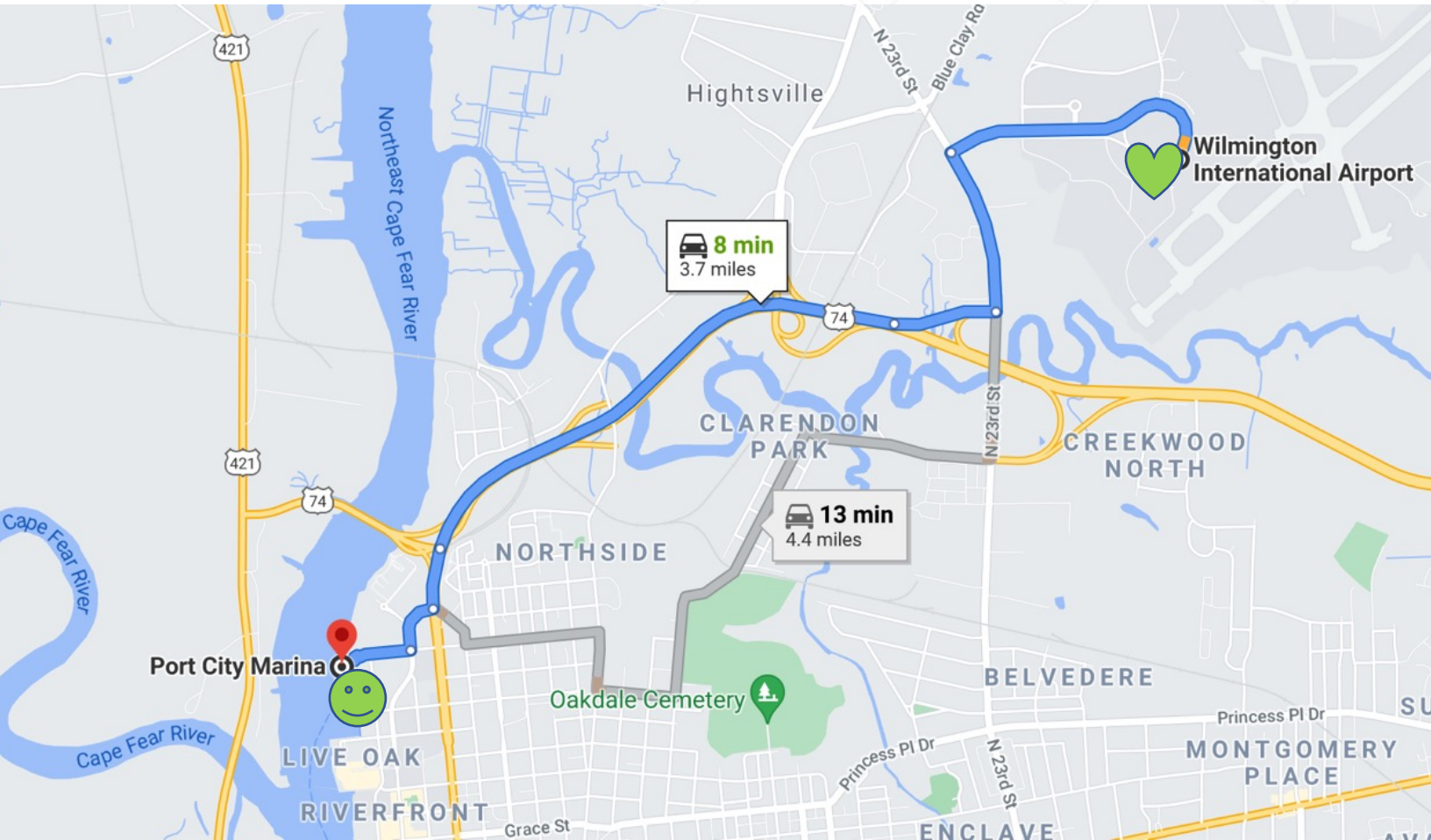




*getting here*

**Getting to the Dockside is easy.  
It's the leaving that sucks.**

With ILM just a few minutes away and Interstate 40 feeding directly into Wilmington, getting to the Dockside is a breeze.



## Getting Around.

### Uber + Lyft Estimates

- ILM Airport \$9.00
- Wrightsville Beach \$16.00
- Carolina Beach \$23.00
- The Battleship \$8.50
- Eagle Island Seafood \$8.00
- CAM Art Museum \$12.50
- Costco \$10.50
- Aquarium \$30.00

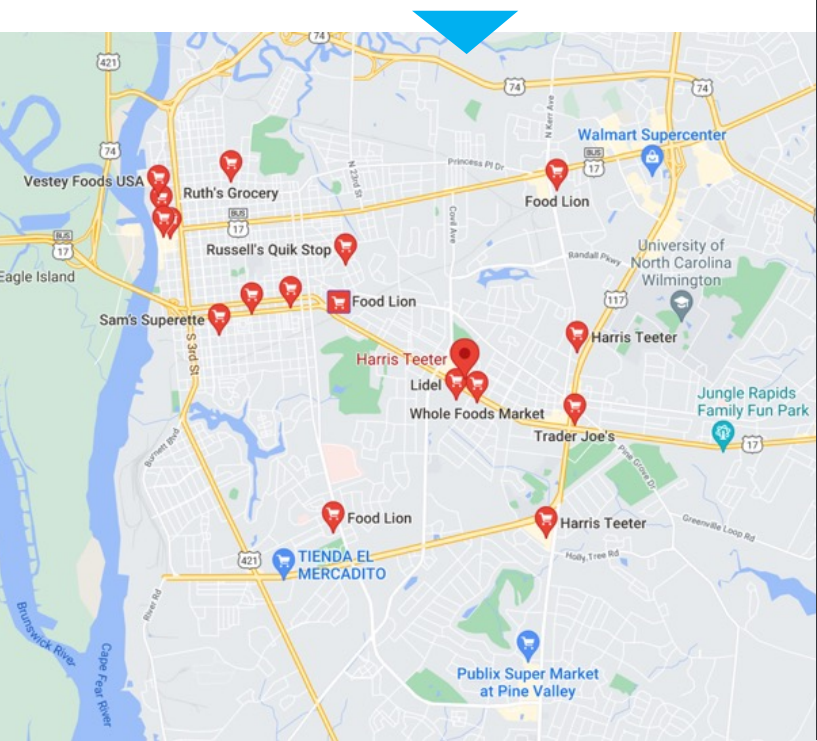




# provisioning

Even with all the great restaurants in the area, you'll surely want to pick up some food and beverages for your stay.

For the initial "major" shopping trip, we recommend Publix, Harris Teeter or Costco.

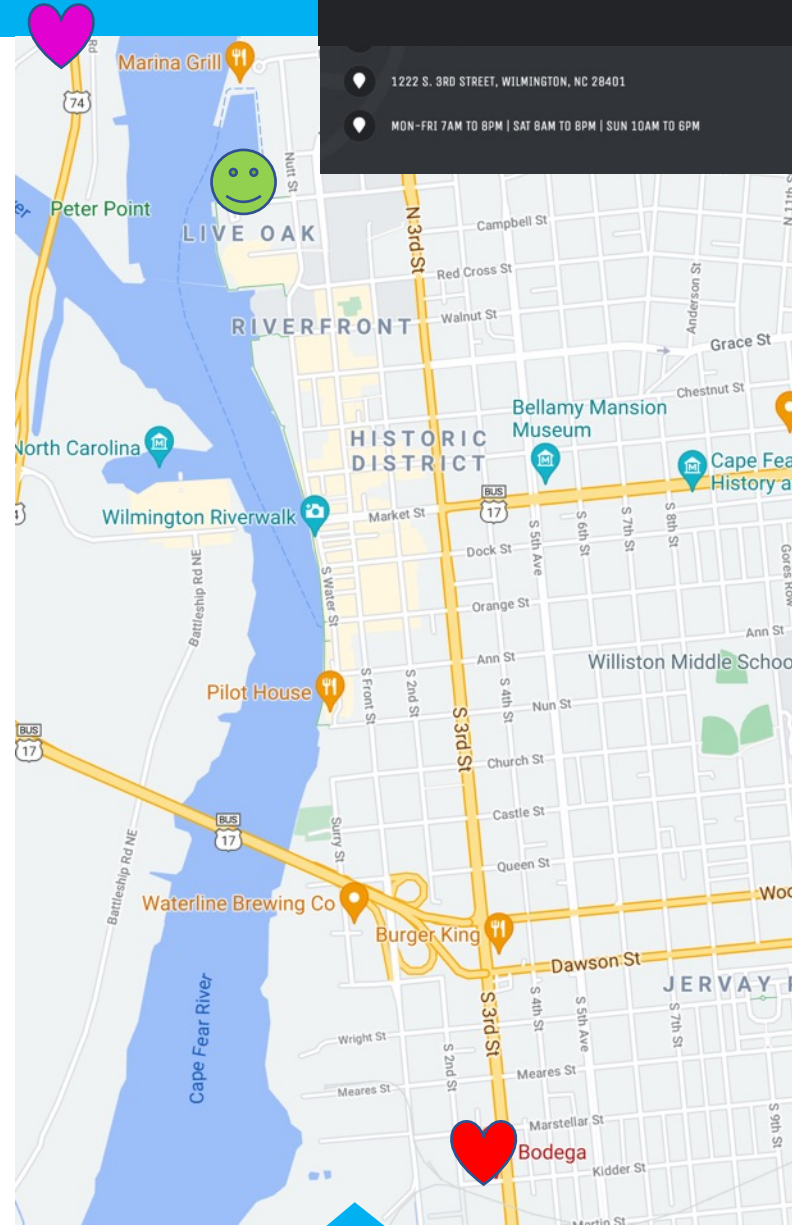


## OUR PICKS

# BODEGA

1222 S. 3RD STREET, WILMINGTON, NC 28401

MON-FRI 7AM TO 8PM | SAT 8AM TO 6PM | SUN 10AM TO 6PM



Nearer to the Docks are several choices for farm fresh veggies, wine, beer and other provisions.

**ABC Store**  
523 S 17th St,

**Bodega**  
1222 S. 3rd St

**Better Basket**  
143 N Front Street

**Eagle Island Seafood**  
2500 US Highway 421 N



**Bodega** has fresh breads, tasty cheeses, quick healthy take and make meals, and Prosecco on tap. Plus beer and wine, chips, and snacks for all ages. They even have an area to enjoy some of your purchases on the patio.

**Eagle Island Seafood**  
Part circus, part seafood, a destination unto itself. Try their ice cream...  
2500 US-421





# Emergency: **911**



**non emergency**

POLICE. xxxxxx



FIRE. xxxxxxxx



MEDICAL ATTENTION / ER  
2131 S 17th St, Wilmington  
xxxxxxx